

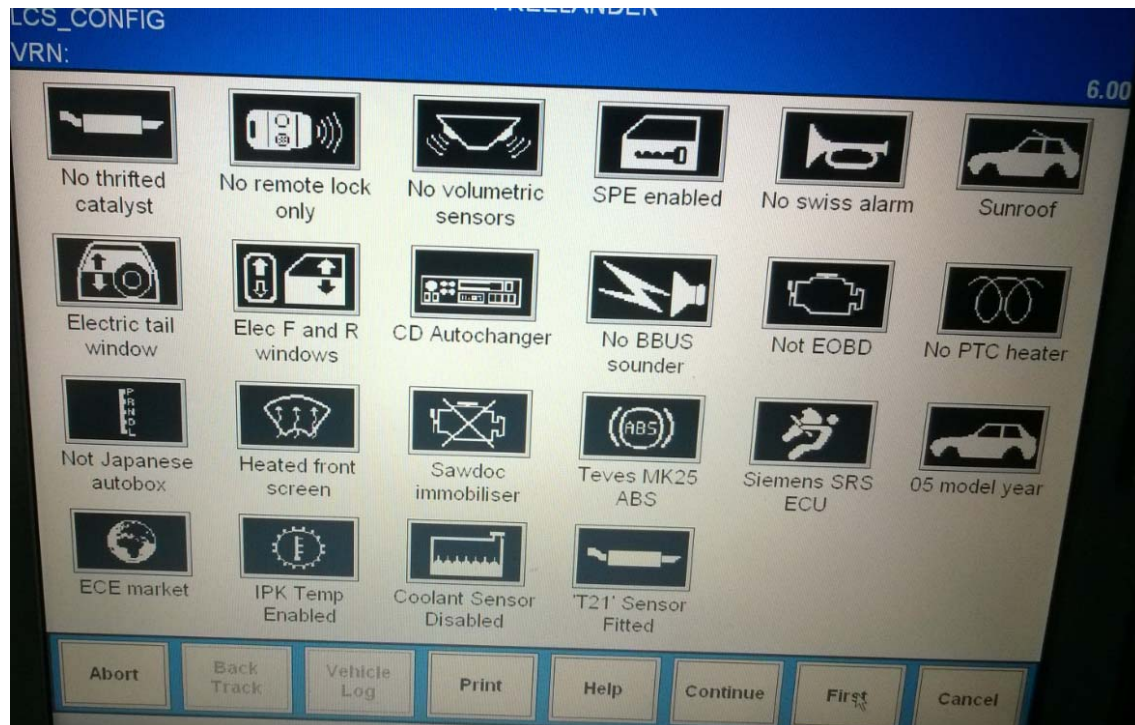
I ran the single wire up and across the top of the oil cooler with additional braiding for protection



Run the cable round past the battery and work towards the engine bay bulkhead where underneath the engine bay fusebox there is a large grommet with a teat that can be cut off to allow additional accessories to be fitted, Lubricate wire with silicon grease to ease passage through bulkhead grommet. Once wire is inside cabin run across and behind heater console and up into the instrument pack binnacle area, connect to instrument. Refit instrument pack.



You now need to find a T4 diagnostics operator to amend the LCS coding in a session. Select LCS coding in Dealer Options section. Select "IPK Temp Enabled" icon. Click continue and the T4 will go through a series of screens to reprogramme the LCS codes.



Once the T4 session is completed you should end up with the temp display showing -30degC. You don't have to do it in this particular order, The T4 session can be done at any time.



Now drive the car, and over a few miles driving the sensor reading will begin to change slowly. The sensor has set threshold defaults programmed in and will not function until these are exceeded. You should end up with this.



Blurb:

The usual common sense applies before tackling any electrical work, battery isolation should be carried out.

All work carried out with this how to is at the installers risk, writer will not be liable for any work carried out.

Enjoy and Drive safely